

Working from Home



**Always
on
Guard**

The Staff at the ESAHEC Teleworking during this COVID-19 Pandemic. We want our Community to know we are doing our part to stay informed and flatten the curve!



Eastern Shore AHEC Annual Report 2019-2020

Email: esahec@esahec.org

Tel: 410-221-2600

Website: www.esahec.org

814 Chesapeake Drive



A Message from our President & Executive Director



Jacob Frego
Executive Director

As FY 20 began, the Center continued to operate smoothly. The Health Careers program reached more students and expanded its offerings with the newly developed program entitled “Grow Your Own.” The Tooth Fairy’s Helper program continued to receive excellent evaluations from youngsters and teachers alike. The Clinical Education program was busy bringing AHEC Scholars from conception to fruition and introducing students to living and working on the Eastern Shore. The

Center’s geriatric programs continued to help students of varying disciplines understand the issues older adults face with aging.

Like many businesses throughout the country, ESAHEC was forced to make adjustments due to the global pandemic. In March, staff began working remotely from home. This transition into the “new normal” involved taking existing in-person programs and offering them virtually. And Zoom calls! Lots of Zoom calls. It was a bit of a learning curve for all staff but with can-do attitudes we were able to continue honoring the Center’s commitment to serving our rural community.

The day will come when Center staff can once again work face to face with our outstanding partners. In the interim, and in the tradition of AHEC, staff will continue working with the Board of Directors to deliver the best possible service to our region.

AHEC MISSION STATEMENT

THROUGH COLLABORATIVE PARTNERSHIPS, AHEC SHALL BECOME THE LEADER IN PROVIDING EDUCATIONAL SERVICES AND PROGRAMS TO ASSIST EASTERN SHORE COMMUNITIES IN THE RECRUITMENT AND RETENTION OF HEALTH CARE PROFESSIONALS

VISION STATEMENT

IMPROVED ACCESS FOR ALL COMMUNITIES ON THE EASTERN SHORE TO QUALITY HEALTH CARE

ESAHEC Board of Directors

Roger Harrell - President

Marty Pusey – Vice President

Wayne Howard – Treasurer

Lana Sherr – Secretary

Nicole Morris

Kathleen McGrath

Stephanie Elliott

Dr. Rich Colgan

Senator Addie Eckardt

Mary Ann Gleason

Lyndsey Scott

Sara Seitz



ESAHEC Staff

Erica Tracy - Fiscal Officer/Office Administrator

Courtney Stouffer - Office Administrator/Data Coordinator

Patti Miller—MHB Navigator

Robin Monahan—MHB Navigator

Consuelo Coffman —MHB Navigator

Amethyst McNabb—MHB Navigator

Jacob Frego- Executive Director

Jennifer Berkman- Deputy Director & Cont. Education

Randy Holliday - GAIT/CHW Trainer

Caitlyn Donohue-Vega - Children's Oral Health

Andrea Dayton - Clinical Education Coordinator

Steffanie Malkus - EARN/Grant Coordinator

Judith Slaughter - ASST Coordinator

Damaris Bourland- Health Careers Coordinator

Continuing Education

Continuing Education Programs is actively involved in the assessment, planning, development, support and delivery of continuing education and professional development that promote interdisciplinary learning opportunities and address the HRSA CORE Topics of Interprofessional Education, Behavioral Health Integration, Social Determinants of Health, Cultural Competency, Practice Transformation, and Current and Emerging Health Issues. Approximately 1,143 participants from a variety of disciplines including medicine, nursing, dentistry, behavioral health, pharmacy, allied health professionals, and adult learners were engaged in these opportunities this year. Highlights.



*Jennifer Berkman
Deputy director &
Continuing Education*

Outstanding Rural Health Practitioner Award



*Dr. Garbely accepting the Maryland
Rural Practitioner Award presented
by: Deputy Director, Jennifer Berkman*

The Eastern Shore Area Health Education Center is pleased to announce that Dr. Sandra Garbely-Kerkovich has been awarded the Maryland Rural Health Association's Outstanding Rural Health Practitioner Award for 2019.

Dr. Garbely, who is Senior Vice President and Chief Dental Officer for Choptank Community Health Systems, was nominated by the Eastern Shore AHEC for her outstanding leadership in developing capacity for dental care on the Eastern Shore. Through her efforts

and advocacy, Dr. Garbely has been instrumental in securing oral surgery services and pediatric dental care on the Shore. Her leadership has resulted in optimizing access to care and improving the overall health and well-being of all citizens of the region.

Health Careers

It has been an exciting year for Health Careers. Our partnerships with high schools continues to grow both in numbers of students participating in Health Career programs and the number of new programs offered. This is the first year that 9th and 10th grades participated in the "Aging Simulation Sensitivity" program. It was very well received with lots of student interaction, questions, and observations. The true success is reflected in the student pre-post presentation surveys which consistently reflect an increase in knowledge of the program material as well as an increased interest in health careers. From September 2019 – March 2020, eleven presentations were made in five high schools reaching 203 students.



When Covid-19 arrived, we were faced with an unprecedented challenge that prohibited completing the full year of scheduled programs. From March – June 2020, nineteen program presentations and field trips were cancelled affecting 385 students in nine high schools. Moving forward, many Health Career programs will be converted to a virtual format rather than live, in person presentations. Working closely with teachers and all of our partners I am confident that Health Careers will have an exciting and successful 2020-2021 year.



*Health Careers Coordinator Damaris
Bourland with student s during a classroom
presentation.*

Employment Advancement Right Now

ESAHEC received funding from the Department of Labor and Licensing Regulation (DLLR) in order for the Eastern Shore Ready to Care



Steffanie Malkus
Grant & EARN Coordinator

partnership to continue employment advancement on the Eastern Shore. The program partners consists of healthcare entities throughout the nine counties on the Eastern Shore who are dedicated to helping individuals secure job placement and/or advancement and filling the employment gap within the industry. Newly appropriated grant funds will be utilized to train, certify and place forty-

five (45) Certified Nursing Assistants (CNAs) throughout the Eastern

Shore. To date the program has trained and placed 112 CNAs throughout the Shore.



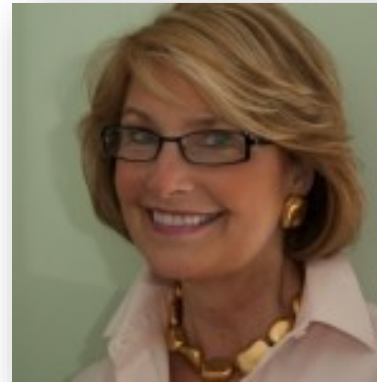
Connecting Kids to Coverage

Connecting Kids to coverage provides direct outreach, education, enrollment and renewal assistance to Maryland Children who are eligible for Medicaid and MCHP, including those with parents who are eligible. Working with our partners Seedco and Chesapeake Multicultural Recourse Center, service is provided to children in 13 Maryland Counties. For More information contact Consuelo Coffman at ccoffman@esahec.org or 410-221-2600



Consuelo Coffman
Connecting Kids to Coverage
Program Manager

Aging Simulation Sensitivity Training



Judy Slaughter
ASST Coordinator

Older adults continue to be the fastest growing segment of the population in the United States. The Business, Economic, and Community Outreach Network (BEACON) at Salisbury University reports that there is an in-migration of retirees who are attracted to the pleasant climate and many amenities offered on the Eastern Shore.

Our return engagement with Dennis Klima, PT, MS, PhD, DPT and the University of Maryland Eastern Shore Physical Therapy students continues to be a

show-stopping event. Every year the students and Dr. Klima each don attire of an 'older adult' character of sorts complete with powdered wigs, apparatus such as walkers

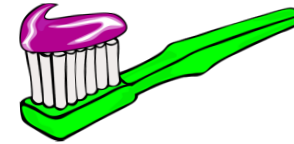
with tennis balls and adorned with wine glass holders, etc. and proceed to conduct a parade around Hazel Hall visiting the administrative offices. This is followed by a 45 minute lecture and 17 aging stations. Participants gain practical strategies to support their older adult clients in pursuit of better health and function.

A Walk in Their Shoes – Aging Simulation Sensitivity Training and **Ethics for Social Workers** for social workers, case managers, nurses, health care workers and the community caretakers was held in 2019 and January, 2020 as a community service by the Eastern Shore Hospital Center Auxiliary at the Eastern Shore Hospital Center. There were 38 in attendance. The Maryland Board of Social Work Examiners awarded a certificate for 3 hours of Category 1 CEU's to each participant. A combined ASST training with a 45 minute lecture on Ethics complete with Table/Group Discussions and Reflections of Case Scenarios on Ethics.

In September, 2019 we presented our annual 4 ASST sessions to 123 third year Salisbury University Nursing program students. This is a always very responsive group. According to one student "she had changed majors from Geriatrics after attending our ASST program, she mentioned that this was the first class that emphasized the importance of developing a listening ear and sincere empathy for older adults AND supplied her with tips to communicate and understand the plight of the older adult."

Oral Health Outreach

Our Tooth Fairy's Helper has been busy outreaching this year! From classroom presentations to parent education programs Mrs. Donhue-Vega has many educational tools in her Fairy bag including puppets, songs, sugar displays, life-sized teeth displays and much more to help children, and adults practice good oral hygiene. For more information on ESAHEC's Oral Health Outreach Program please contact Ms. Donohue-Vega at cvega@esahec.org. or 410-221-260 Ext106.



Pictures above of Mrs. Donhue-Vega Outreaching

AHEC Scholars & Clinical Education

Medical student rotation during the 2019/2020 school year ended abruptly for the clinical education program due to the global pandemic. Students who were doing their rotations in our region were called back to Baltimore in the middle of March to complete their requirements remotely. April rotations were cancelled and our much-anticipated two-week shadowing experiences for UMB Primary Care Track medical students were not permitted this summer. We are looking forward to welcoming back medical students in September 2020 to resume regularly scheduled rotations.



Clinical Education Coordinator
Andrea Dayton

Collaborating with University of Maryland Baltimore, Salisbury University and University of Maryland Eastern Shore, we continue the AHEC Scholars Program which is bringing the health professional students heightened experiences of working in a collaborative environment.

Geriatric Assessment Interdisciplinary Team (GAIT)

During FY'20, the ESAHEC delivered 3 GAITS in 3 counties. The first was held in Cecil County at Union Hospital focusing on how interdisciplinary teams work within the hospital environment and included 16 students from 4 different disciplines. The second was held in Worcester County at Coastal Hospice and focused on Interdisciplinary care of the hospice patient. This training included 20 students representing 6 disciplines. The third GAIT was held in Centreville at Corsica Hills Center. This training included 13 students from 6 different disciplines and emphasized interdisciplinary teamwork within a long term/rehabilitation facility.

The second area the GGEAR Grant funds is the geriatric conference series. The ESAHEC delivered 2 geriatric-focused conferences during FY'20. These conferences are half-day programs designed to provide professional development and continuing education opportunities for behavioral and health care professionals, case managers, caregivers, students and other community stakeholders.

Affordable Care Act

ESAHEC once again continues its contract with Seedco, Inc. and the Maryland Health Benefit Exchange to implement the Affordable Care Act on Maryland's Eastern Shore with the goal of making health coverage affordable and more accessible for Marylanders, giving citizens the opportunity to access health insurance care for themselves and their families.



**Robin Monahan &
Consuelo Coffman**
Navigators

In our sixth year, the ESAHEC is proud of the accomplishments and partnerships this program has produced. These services to our community would not be possible if it was not for our All-Star Health Navigator team. Special thanks to our dedicated team of Navigators who have worked diligently to serve our Region in new and creative ways during the Covid-19 Pandemic.



Patti Miller
Navigator

Learn about opportunities for health insurance ow. Seedco's Navigators are working remotely and available- to provide assistance over the telephone. Call the Seedco Hot Line at 866-492-6057, Monday through Friday, 9:00 am-4:00 pm to speak with a Navigator.

OR

Visit MarylandHealthConnection.gov or download the free "Enroll MHC" mobile app. Free consumer assistance is available by calling 855-642-8572 weekdays from 8 a.m. to 6 p.m. Deaf and hard of hearing may use Relay.

Name	Phone	Email	Area
Robin Monahan	443-515-0069	rmonahan@esahec.org	Talbot County
Patti Miller	443-515-0348	pmiller@esahec.org	Dorchester County
Amethyst McNabb	443-515-0106	Amcnabb@esahec.org	Kent County
Amethyst McNabb	443-515-0106	Amcnabb@esahec.org	Queen Anne's County

